



faveton®

faveton®



<i>Faveton Ceram</i> .....	6
<i>Faveton Bersal and Bersal Pack</i> .....	7
<i>Faveton Acqua</i> .....	8
<i>Faveton Louvers</i> .....	10
<i>Special Tiles</i> .....	12
<i>Standard and Metallic Colors</i> .....	16
<i>Nature Colors</i> .....	17
<i>Special Colors and Finishes</i> .....	18
<i>Table of Properties</i> .....	18
<i>Faveton Design</i> .....	20

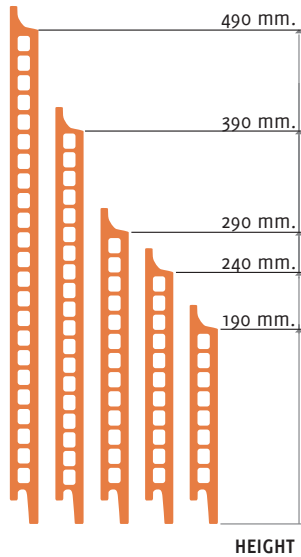
*ARKANSAS GARLAND CENTER* Arkansas, USA  
Arquitect: HLKB ARCHITECTUR



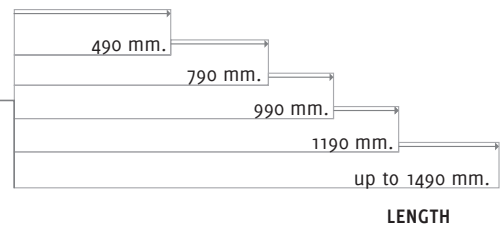


# FAVETON CERAM

The 28 mm. thick ceramic tile is presented in several heights and a maximum length of 1500 mm. The overlapping horizontal joints prevent water entering into the air gap improving the technical performance of the building.



THICKNESS 28 mm.  
WEIGHT 48 KG/m<sup>2</sup>



*Tile sizes referred to real dimensions. Dimensions between axes are 10mm bigger than the real dimension, e.g. real tile 290x990 mm. equal to a tile size of 300x1000 mm. between axes.*

## SYSTEMS AVAILABLE FOR CERAM

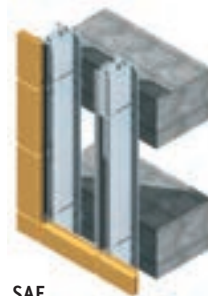
### VENTILATED FACADE SYSTEMS



SAH



SAC



SAF



SAV

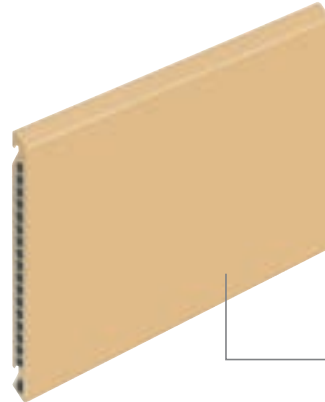
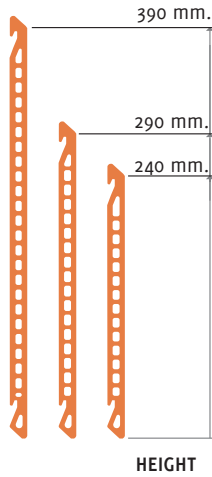
### NOT VENTILATED FACADE SYSTEMS



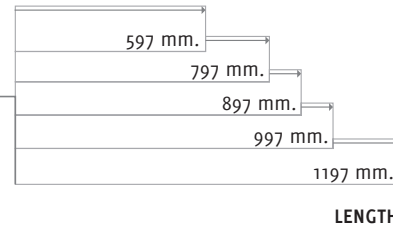
OMEGA

# FAVETON BERSAL

With 16 mm. think is our thinner tile. It is available in three different heights and a maximum length of 1200 mm. Combining design and lightness to streamline the use of ceramics in different types of projects. Bersal is recommended for rehabilitation projects.



THICKNESS 16 mm.  
WEIGHT 32 KG/m<sup>2</sup>



*Tile sizes referred to real dimensions. Dimensions between axes are 10 mm. bigger in height and 3 mm. in length, e.g. real tile 290x997 mm. equal to a tile size of 300x1000 mm. between axes.*

# FAVETON BERSAL PACK

FAVETON PACK is a material on stock ready to pick up. It is the same shape of bersal but fixed to a tile size of 300x600 mm. (module size between axis) and available in 3 colors: beige, black and red. FAVETON PACK is a versatile product, ideal for restoration.



Ref. BSoo



Ref. R021



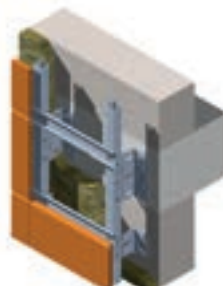
Ref. NE04

# SYSTEMS AVAILABLE FOR BERSAL

## VENTILATED FACADE SYSTEMS



SAC Alum



SAC Steel



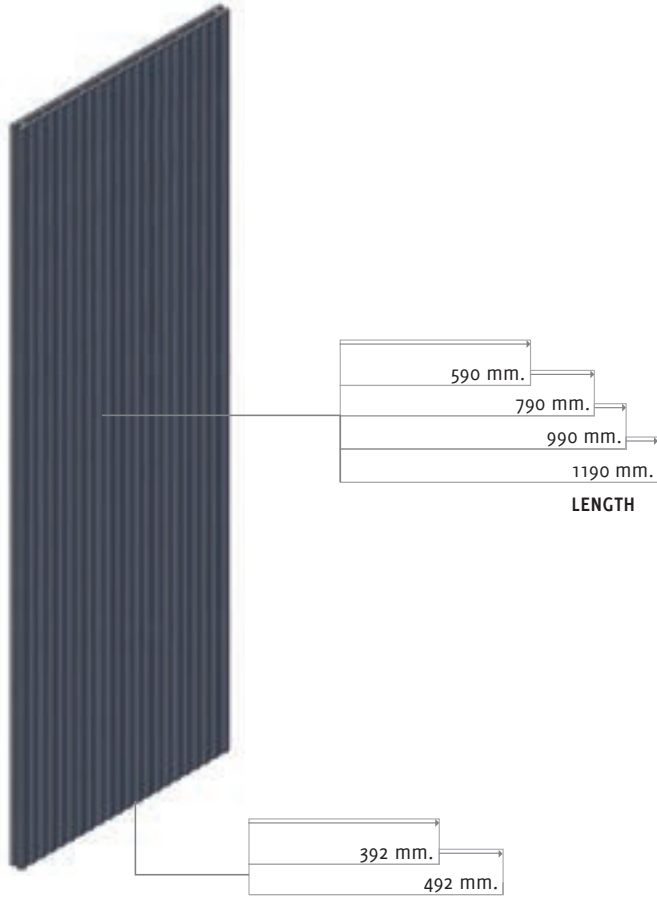
SAF

## NOT VENTILATED FACADE SYSTEMS



SAR

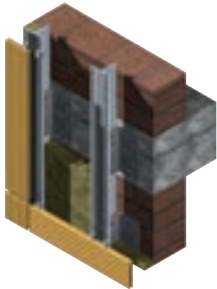
# FAVETON ACQUA



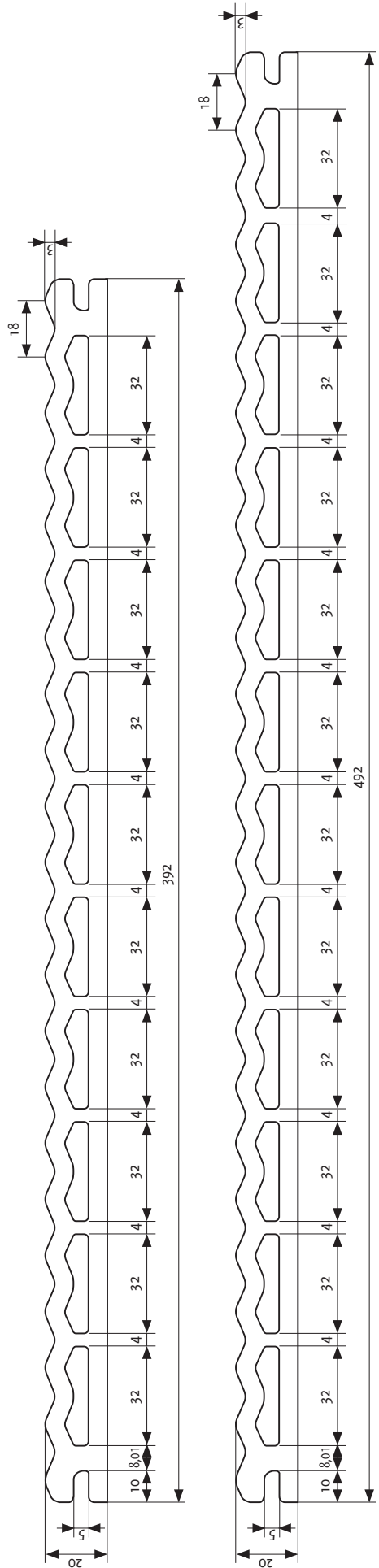
All the FAVETON ACQUA tiles are 20 mm deep. Available in shade of green, blue and the entire FAVETON color range.

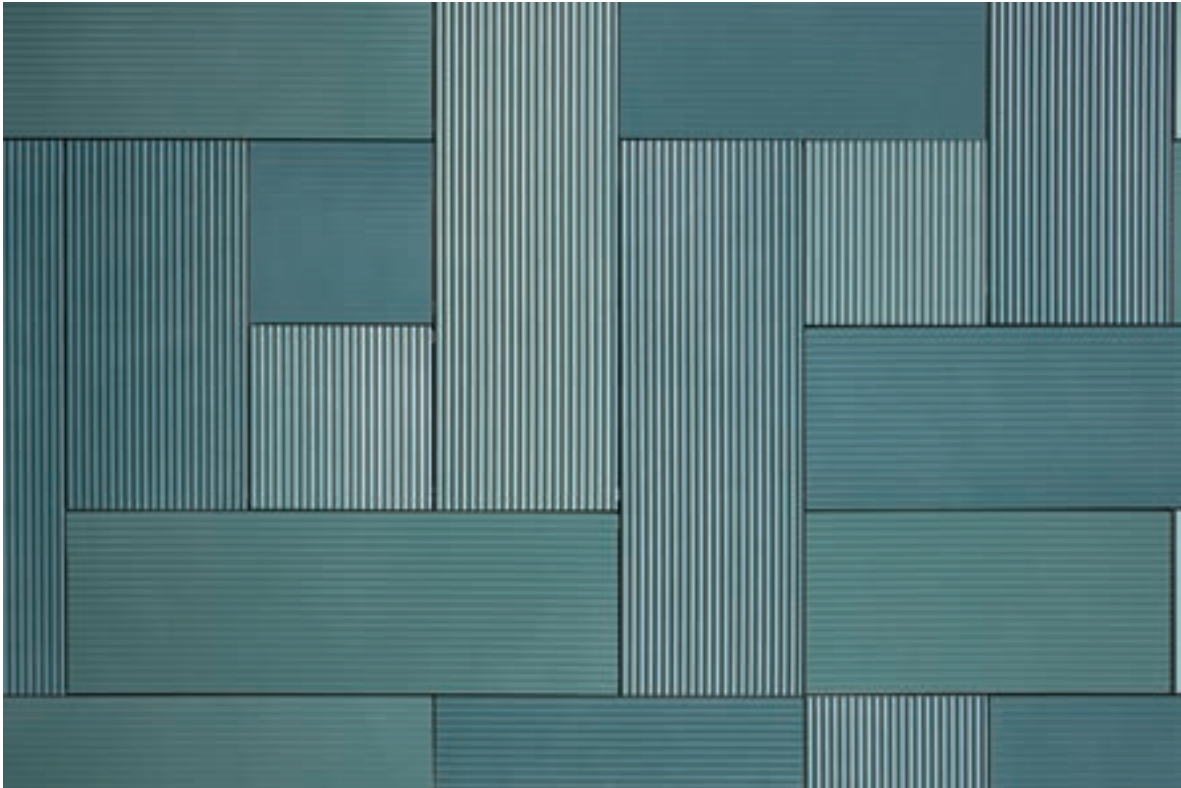
## SYSTEMS AVAILABLE FOR ACQUA

### VENTILATED FACADE SYSTEMS

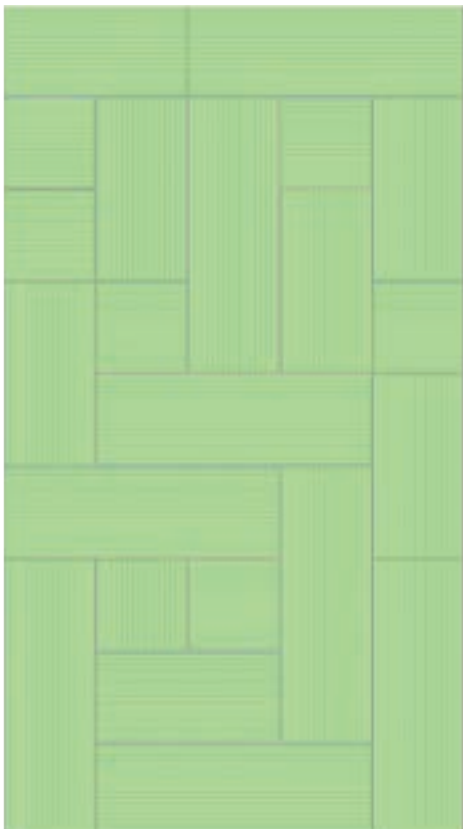


SAH





FAVETON ACQUA´S been designed to be placed in horizontal position as well in vertical position. This flexibility for installation, together with the undulating surface, provides interesting visual effects due to acting of light changes according to the installation position. The new tiles are compatible with the standard installation Faveton system S.A.H., which means the work experience acquired with this system is totally applicable to the new one.



The waves of the ceramic tiles, placed in different orientations, provide volume and texture in the facade. With the impact of rays of light, the facade shows shades which give it originality and character.

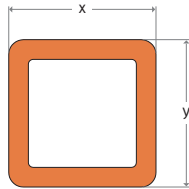
# FAVETON LOUVERS

FAVETON offers a wide variety of ceramic louvers with four different shapes: briol, java, orona, espheric.

Maximum length 1500 mm.

Louvers weights:  
 BRIOL 5,5 KG/ML  
 JAVA 10 KG/ML  
 ORONA 14 KG/ML

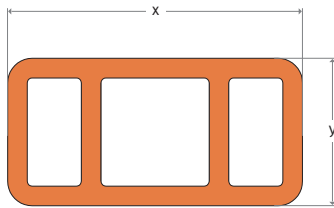
x	y
50 mm.	50 mm.
60 mm.	60 mm.



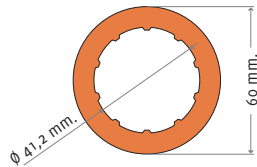
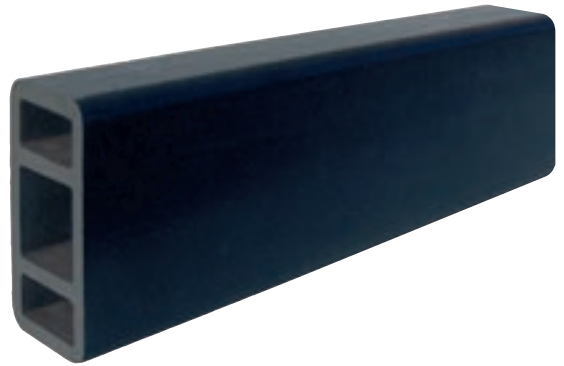
**BRIOL**



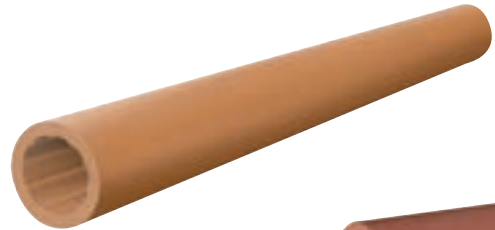
x	y
60 mm.	120 mm.
50 mm.	130 mm.
60 mm.	150 mm.



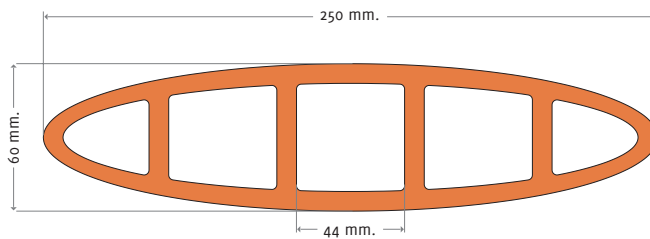
**JAVA**



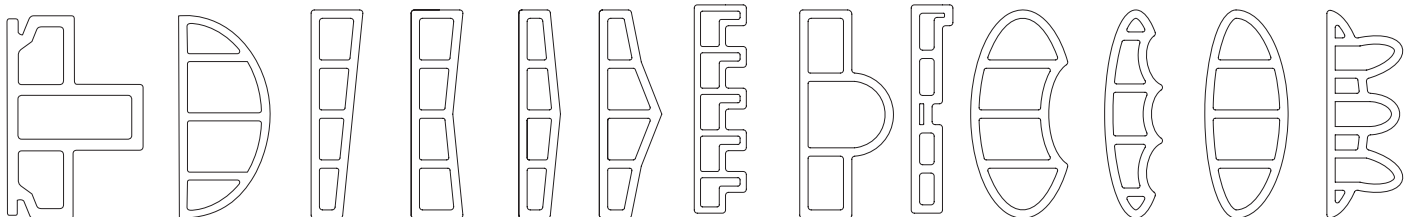
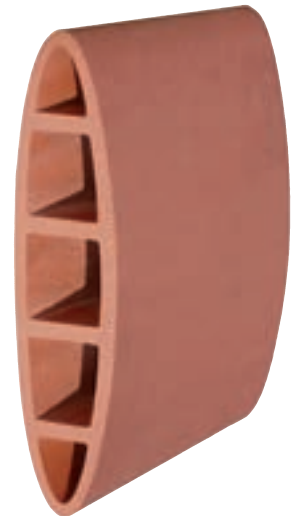
**SPHERIC**



x	y
250 mm.	60 mm.



**ORONA**



# PRESTRESSED LOUVERS

Trough the prestressing of a louver assembly, a monolithic body is built that allows us to reach up to three meters long louvers. This procedure that can be applied to different kind of louvers, reduces the supporting structure and lightens the appearance.



# SYSTEMS AVAILABLE FOR LOUVERS VENTILATED FACADE SYSTEMS



BRIOL



JAVA



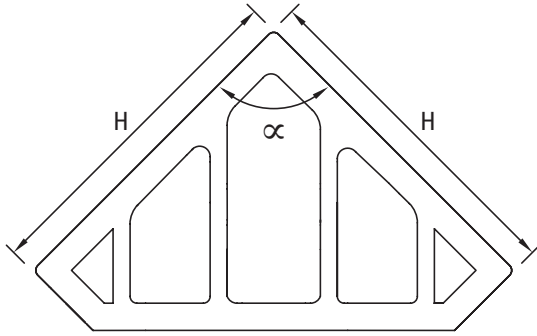
ORONA



# SPECIAL TILES

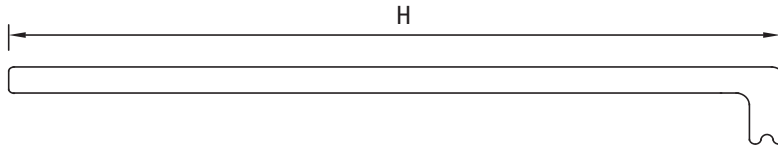
The ceramic extrusion achieves unique designs that are impossible to be made by other manufacturing process.

Faveton has a wide range of models and special pieces covering the basic needs of projects and adapting tiles to architectural design.

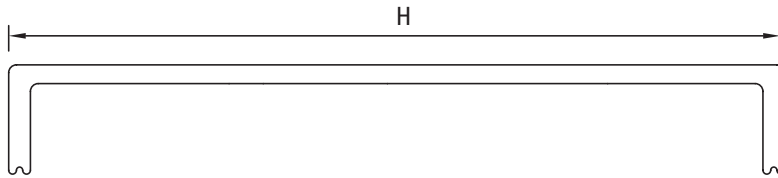


WEIGHTS OF SOME SPECIAL PIECE:  
CORONATION 11,2 KG/ML  
NORMAL CORNER 8,1 KG/ML

H	α
100 mm.	90°
100 mm.	135°
195 mm.	90°



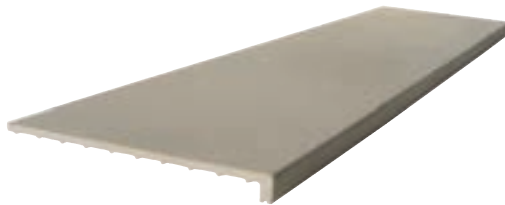
H	LENGTH
320 mm.	Up to 1200
500 mm.	Up to 600



H	LENGTH
390 mm.	1200
500 mm.	Up to 600



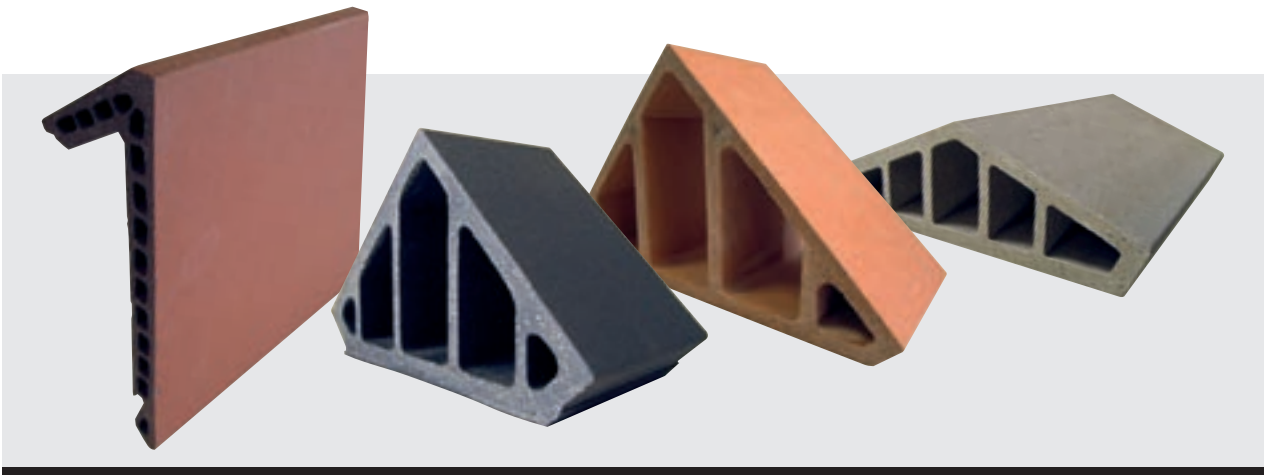
CORNER



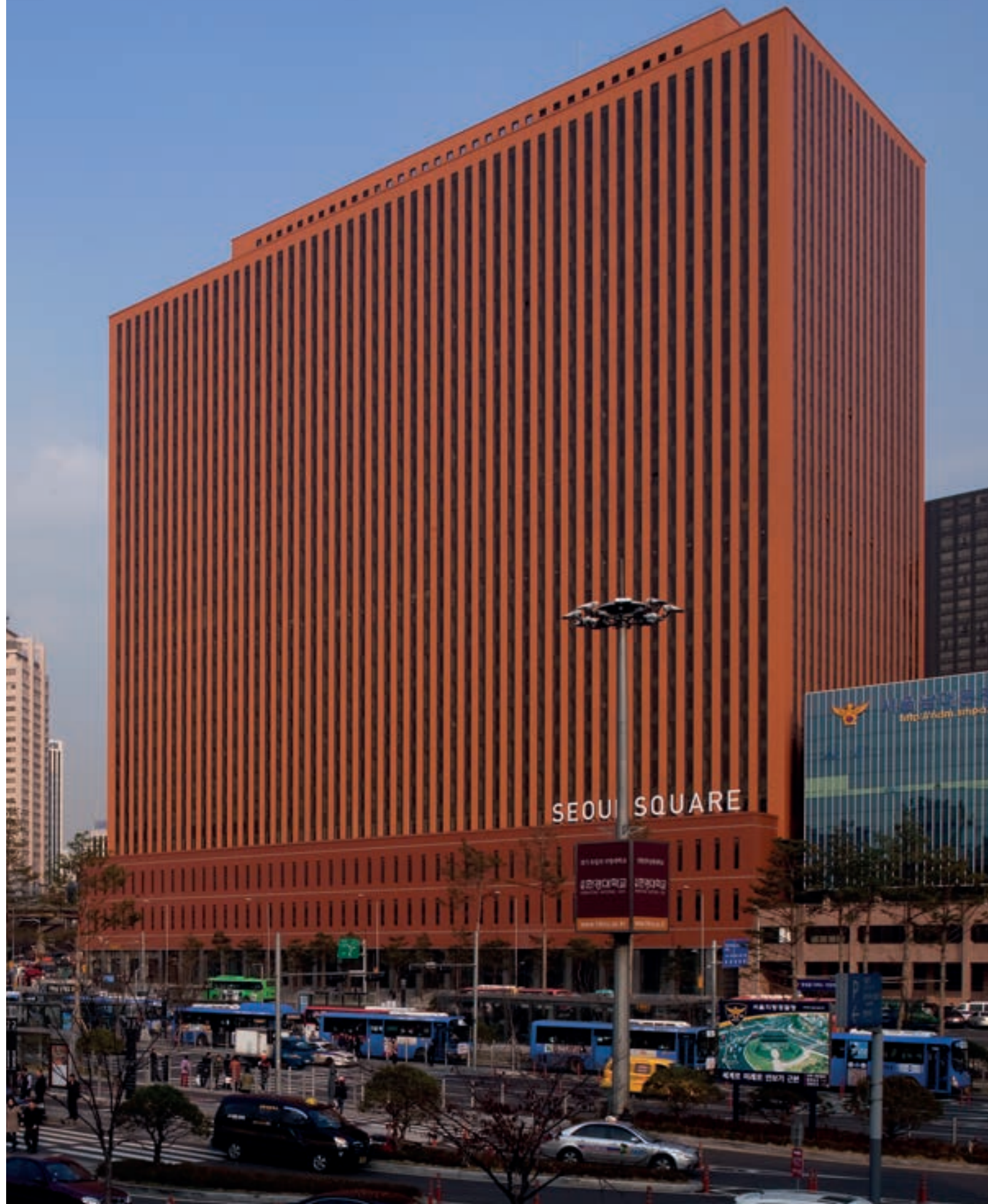
WINDOWSILL



COPPING



*DAEWOO Building (Korea)*  
Arquitect: HWANG SANG HEE

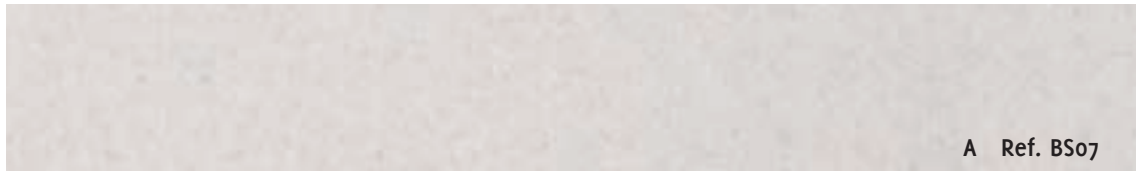




*BEIJING Hotel Beijing, China*  
Arquitect: IPPR Engineering International



# STANDARD AND METALLIC COLORS



A Ref. BS07



A Ref. NA01



B Ref. NA03



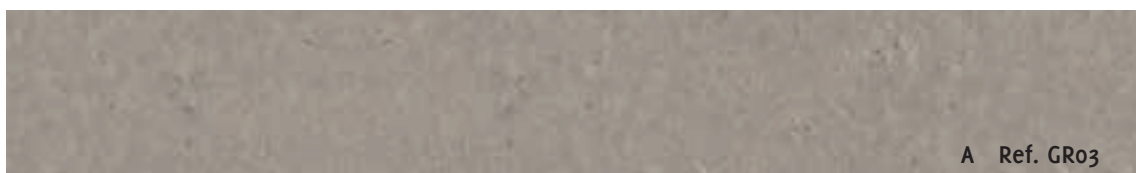
B Ref. TE02



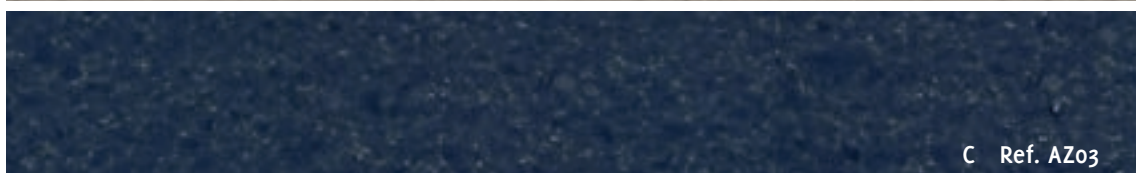
A Ref. R0011



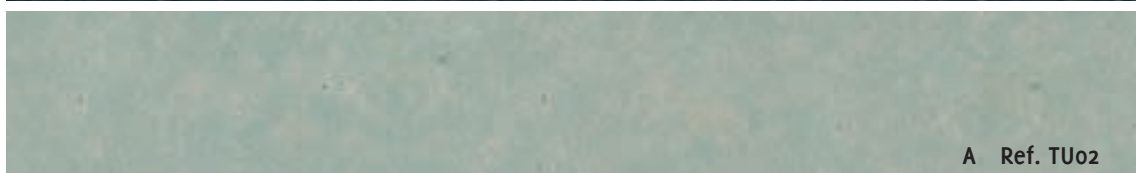
C Ref. NE04



A Ref. GR03



C Ref. AZ03



A Ref. TU02

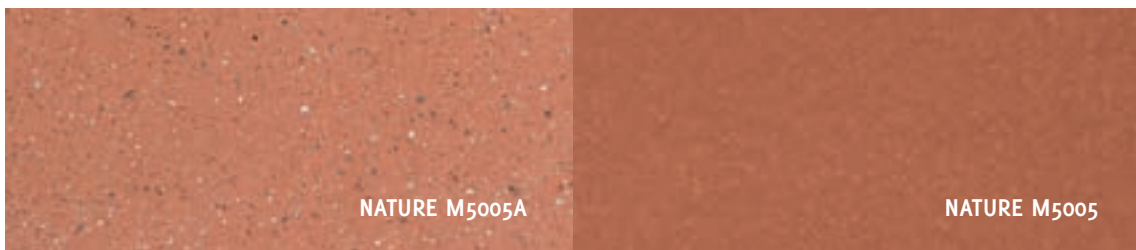
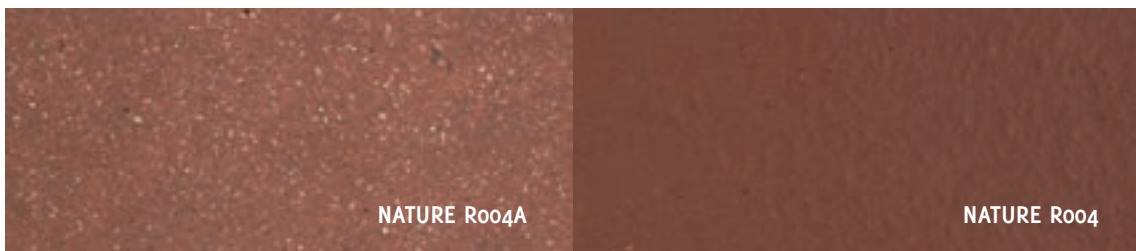


COPPER

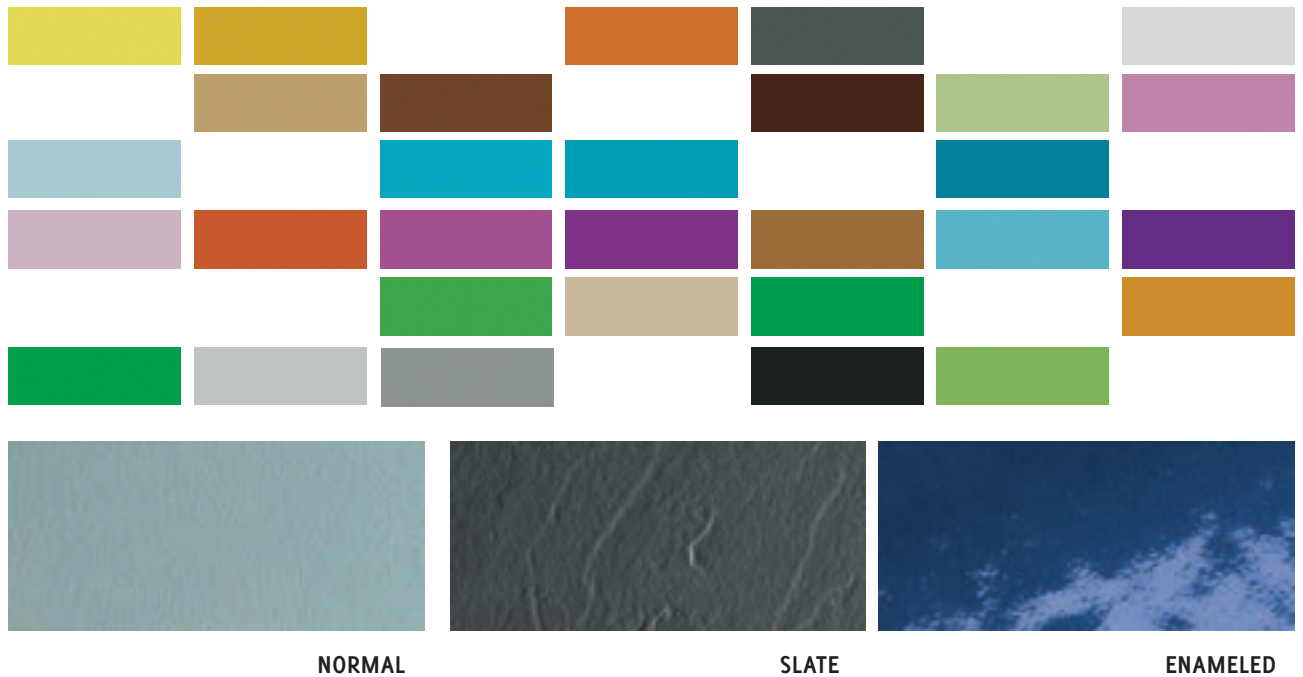


SILVER

# NATURE COLORS



# SPECIAL COLORS AND FINISHES



NORMAL

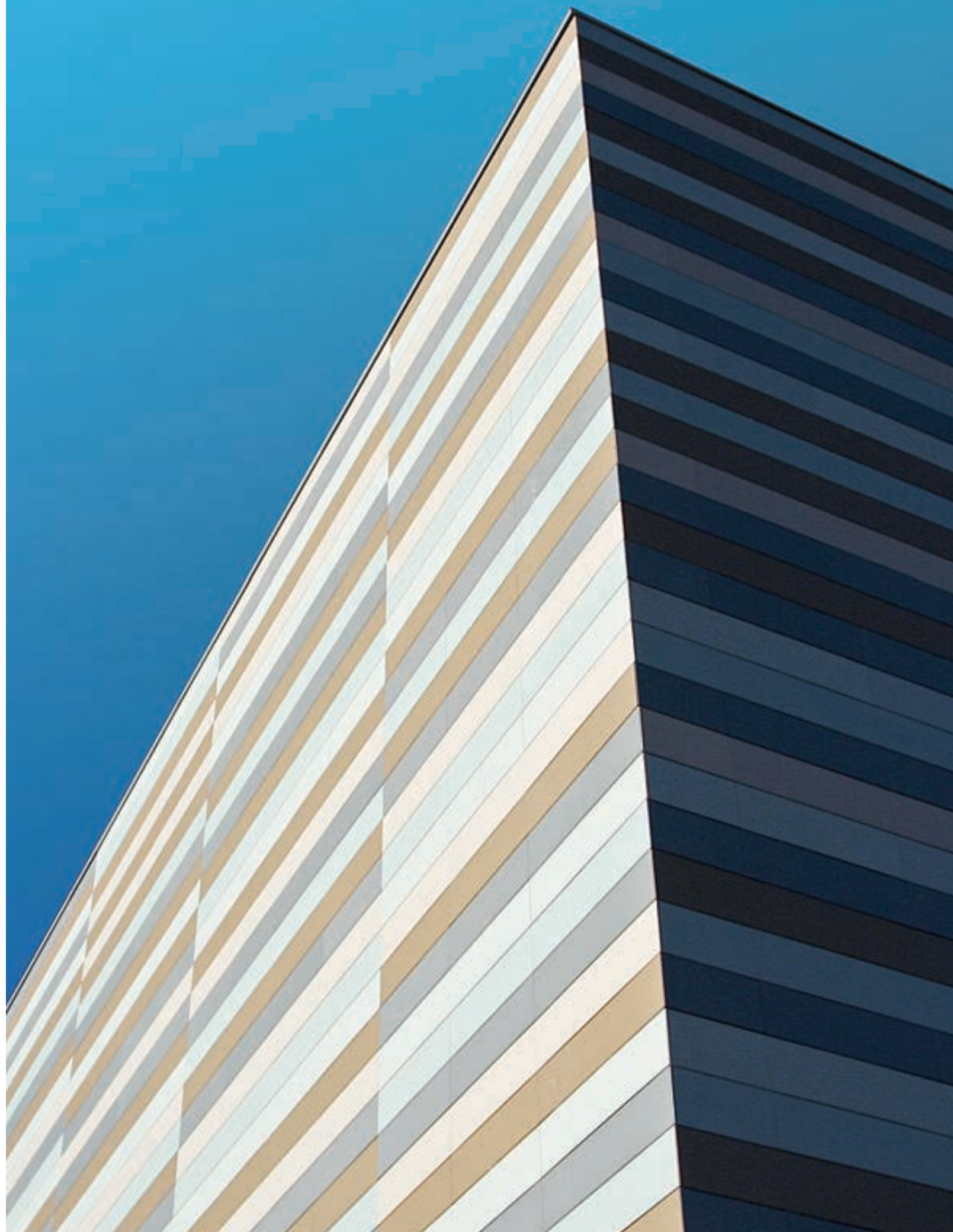
SLATE

ENAMELED

## TABLE OF PROPERTIES

PROPERTIES.	RULE.	FAVETON VALUES.
Tolerances.	ISO 10545-2	<ul style="list-style-type: none"> <li>- Length (Extrusion Direction) +/- 1 mm *</li> <li>- Height +/- 2 mm *</li> <li>- Thickness +/- 10% *</li> <li>- Straightness (Extrusion Direction) +/- 0,3% of length. *</li> <li>- Rectangulativity +/- 1% of height.</li> <li>- Surface flatness +/- 0,5% of diagonal or height.</li> </ul>
(*) According to dimensions of format.		
Water absorption.	ISO 10545-3	<1% or 3-6% depending on color
Bending strength.	ISO 10545-4	FVC 15-20N/mm <sup>2</sup> – FVB 14-18N/mm <sup>2</sup> depending on color
Linear thermal expansion.	ISO 10545-8	Coefficient of expansion $5,7 \times 10^{-6} (K^{-1})$ . Test ITC.
Resistance to thermal shock.	ISO 10545-9	Unalterable up to 145°C, according to test.
Moisture expansion.	ISO 10545-10	Mean value <0,1 mm/m, maximum value <0,1 mm/m. Test ITC.Test ITC.
Frost resistance.	ISO 10545-12	Unalterable according to test (100 cycles + 5°C a -5°C).
Chemical resistance.	ISO 10545-13	Only applicable in corrosive conditions. At least G and B class.
Stain resistance.	ISO 10545-14	At least CLASS 3.
Color differences.	ISO 10545-16	$\Delta E < 2$ , nature colors <3

**ALBERITE SCHOOL · LA RIOJA (Spain)**  
Arquitect: MIGUEL FERNÁNDEZ and JESÚS ALFARO



# FAVETON DESIGN

*Imagine and create your own facade*

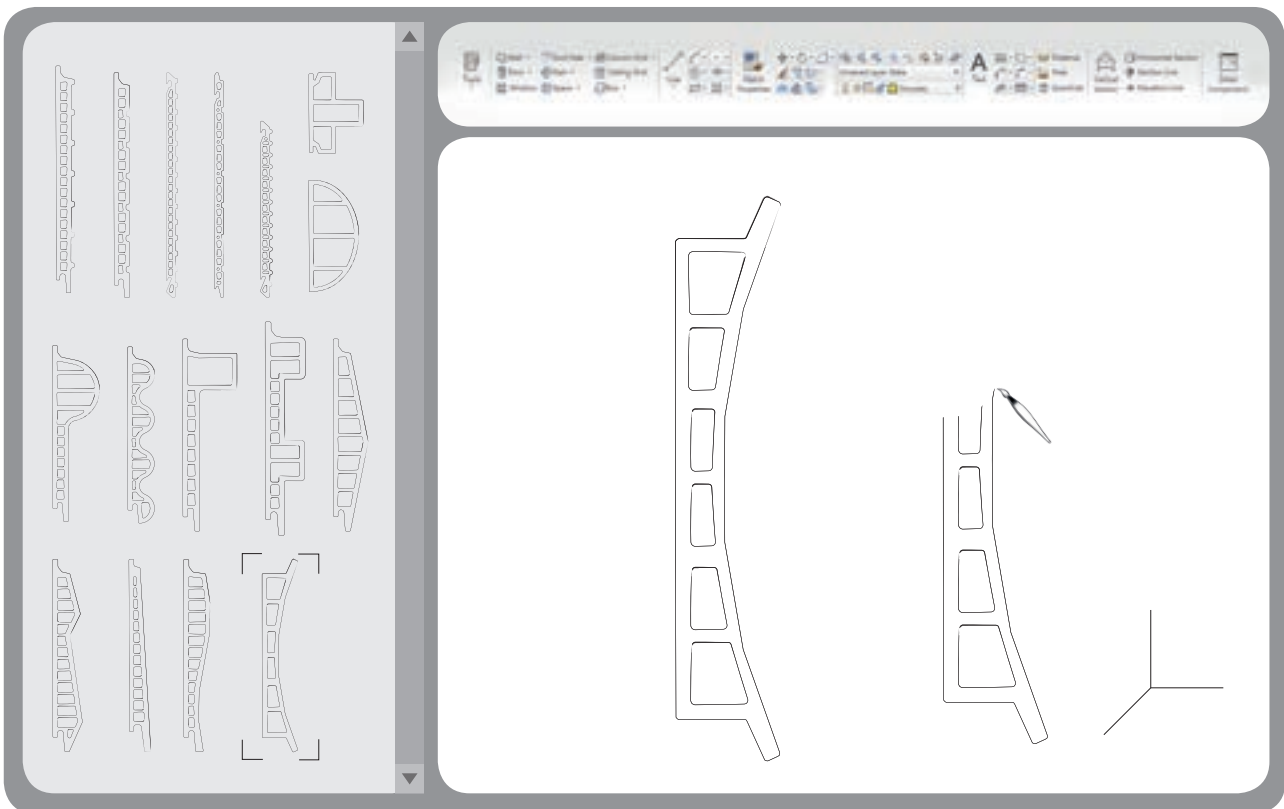
Application available at [www.faveton.com](http://www.faveton.com)

Unlimited imagination.

Design makes possible to give form to the ideas. In a few simple steps, the new application guides us from the process of ceramic piece design, up to showing how our creation would be applied in a building.

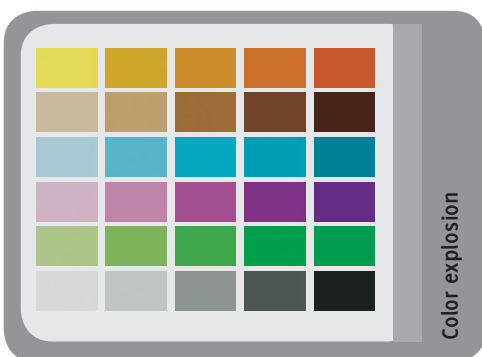
## STEP 1. Creativity

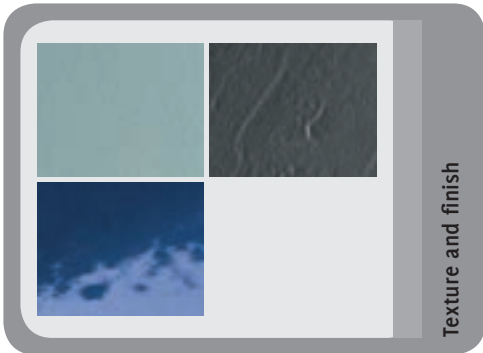
When we already know how we would like to be our facade, we give form to the base piece. When opening the application, displayed a white box as a canvas equipped with the right tools that will allow us to draw what we want.



## STEP 2. Color explosion

This second phase is to give tone to the piece. There is no limit, we can choose any shade we want. In addition, Faveton has a wide range of colors that can help us with the election.

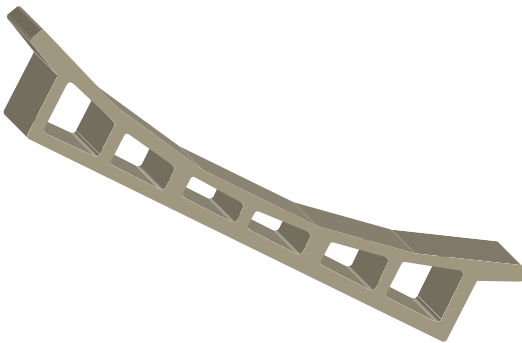




### STEP 3. Texture and finish

Once we have chosen and applied the color, we must choose the texture that will give the final appearance to the piece.

Faveton has 3 different types of finish: normal, slate and enameled.



### STEP 4. High definition: 3D

Once we have designed our part, we can give it volume in 3 dimensions.



### STEP 5. How would be our building?

Final time has come. Let's see how our piece would be applied on a facade. The program loads the last phase of the process and finally, shows a building dressed from head to toe with our creation.

FAVETON is a ceramic tile product for ventilated facades. Our tiles are made by extrusion, and have a wide range of formats, colors and finishes that provide technical and aesthetic solutions for buildings.

The type of clay used (increases frost, chemical resistance and bending strength) makes FAVETON one of the most appropriate materials in ventilated facades.

**ARAGONIA Building** (Spain)

Arquitect: **RAFAEL MONEO**







**faveton**<sup>®</sup>

[www.faveton.com](http://www.faveton.com)

Tel. (+34) 976 140 311

Fax. (+34) 976 141 164

E-mail. [info@faveton.com](mailto:info@faveton.com)